

**Bletsoe  
Gazette  
2003**

# Contents

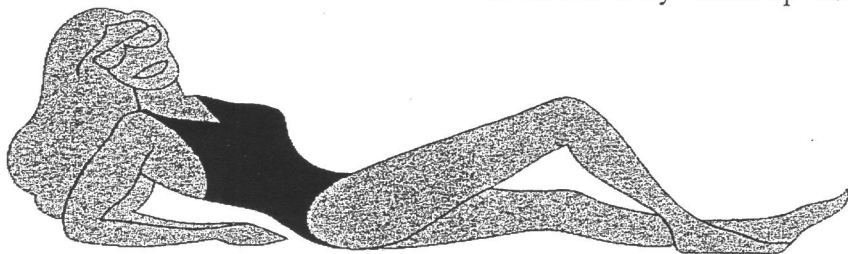
Parish Council .....	1
Play Area .....	4
Bletsoe Website .....	5
Library .....	5
Apples Galore .....	5
Approved Traders .....	6
Village Hall .....	6
Whist/Bingo .....	8
Coffee Mornings .....	8
Bletsoe WI .....	9
Friends of St Mary's .....	9
St Mary's Church .....	12
Bletsoe Fete .....	13
Bletsoe Broadband .....	14
Bayleaf .....	15

# Parish Council

If anything calls for an Alastair Campbell to 'sex it up', it must be a report on the affairs of the Parish Council. Just imagine the electoral impact of a dodgy dossier: Parish Council ready to launch Weapons of Mass Instruction in 45 minutes! Councillors resolved to combat Terrorism and the Forces of Evil.

But, alas, the everyday reality is somewhat less sensational. It would be merciful, however, to spare current

readers some of the more tedious details by referring them to the Chairman's Annual Report, which was distributed to all parishioners following the Parish Meeting in April of this year. (If you missed filing it away, the Clerk can provide another copy, or you might find it, together with the minutes of parish council meetings, on the village website – [www.bletsoe.org.uk](http://www.bletsoe.org.uk)) So perhaps the council's subsequent affairs, conducted over the past six months, can be discreetly 'sexed up' after all.



## A New Highways Liaison

The promising relationship between the Parish Council and County Hall's wealthy partner, Hyder Business Services, has recently been nipped in the bud. The Hyder-Halls inform us that we must now walk the parish highways and byways with Raynesway Construction (Rayne for short), who will service our needs more efficiently! The course of true love, like the roadways, never did run smooth.

## Slow, Slow, Quiet, Quiet, Slow

Residents and frequenters of Coplowe Lane will be pleased to hear that the 30mph speed limit is to be extended as far as the bend above Herdsman Farm. The council is still pressing County Hall to designate both Coplowe Lane and Bourne End Lane as 'Quiet Lanes', a status that would give priority to leisure activities and would permit an even lower speed limit. Progress, however, is slow . . . slow . . . slow!

## **Under-Age Motor-Cycling & Anti-Social Climbing**

The new equipment in the extended Play Area, purchased with the help of a Rural Grant from Bedford Borough Council, has generated increased juvenile activity, ranging from solo TT racing to wall-climbing. Less desirably, trampolining on top of the Wendy House has again caused damage to the roofing felt. General encouragement of responsible behaviour by children using the Play Area might help to prevent councillors from being driven up the wall!

## **All Aboard the Saucy Sue**

Two handsome new notice-boards have been procured (again with financial help from the Borough Council) and should be launched by the end of the year. They will provide more space for general publicity material, and parishioners who wish to go on board should be able to gain access via the Clerk.

## **Going Round in Circles**

You may think that's what the Parish Council has always done (I can't possibly comment), but plans are now afoot to allow Bletsoe walkers to do the same. The council is investigating the prospect of creating a 4-mile circular walk by persuading local farmers to allow permissive footpaths

across their land, and thus opening up the river route to Radwell and Sharnbrook Mill. This prospect would seem particularly attractive in view of the recent ploughing of set-aside land within the parish.

## **Roll of Honour**

As in previous years, the Clerk's cheerful industry (well beyond the call of duty) has kept the wheels of administration turning smoothly. The council is extremely grateful to him, as well as to those parishioners who have given their time to keep the village looking spick and span. Without the continuing efforts of Mick O'Connor, David Baker, Richard Hales and Joyce and Nick Crocker, the annual precept could not have been maintained at the same level as last year.

## **The Significant Seven**

Names and telephone numbers of present members of the Council are:

Peter Hetherington (Chairman) 781851

Edward Bean (Vice Chairman) 781372

Patrick Brooks 781476

Michael Grimes 781183

David Martin 782579

Jason Palmer (Tree Warden)  
07742 607421

Jocelyn Wallis 781604

Clerk: Malcolm 'Bill' Rowland 781646

If you wish to raise parish issues, don't hesitate to contact any of the above.



## More Vital Statistics

The Parish Council meets monthly (except in August) in the Village Hall, usually on the first Monday of the month at 7.30 pm. Meetings are open to the public who have the

opportunity to speak on parish concerns. Agendas are posted a week in advance on the parish notice boards, and minutes of the previous month's meeting are displayed in the church porch.

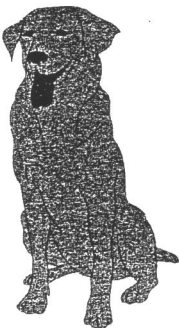
*Peter Hetherington (Chairman)*

### *The Good Dog-owner's Guide to Bletsoe*

*Because of its rural setting, Bletsoe is a dog-owner's paradise, but please don't spoil it for others.*

*Always observe these simple guide-lines:*

- 1. No dogs in the Children's Play Area or the Memorial Garden;*
- 2. Keep dogs on lead in the Parish Field;*
- 3. Clear up and dispose of any fouling in public places.*



*Good Dogs!*

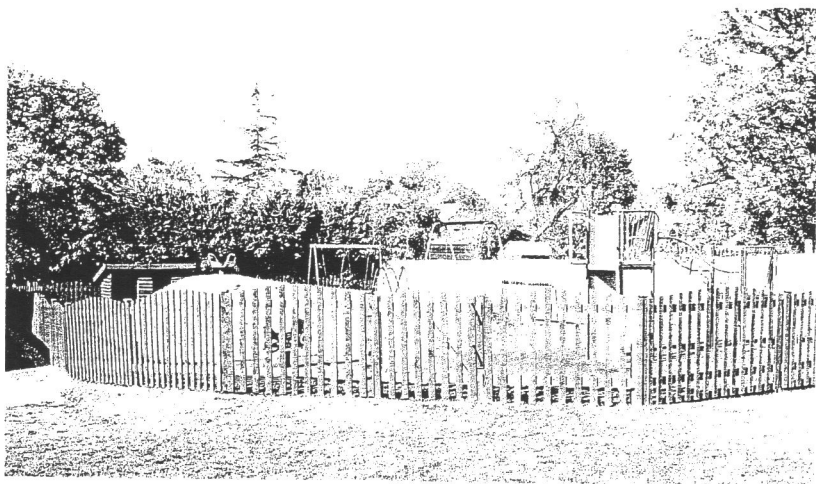


# Play Area

Last year we applied for a grant from Bedford Borough Council to replace and add to the equipment in the play area and parish field. We were fortunate to be awarded sufficient monies to facilitate the purchase of a climbing frame with integral climbing wall, sprung motorbike toy, safety tiles (a must have nowadays), and new goalposts.

This spring the management of the play area was transferred from the Village Hall to the Parish Council and the play area was extended, fenced and the new equipment installed.

We felt a little like the pied piper of Hamelin. Children (and adults) we had never seen appeared out of the woodwork and played!



The new equipment has been a great success and thanks go to the villagers who assisted in the digging up of tons of concrete and the subsequent mixing of new concrete to fix the goalposts in place.

With the introduction of the new facilities, the 'enthusiasm' displayed by some of our younger villagers has resulted in a small amount of damage. However with the support of the

community and the individuals concerned, these incidents have receded such that repairs are now rare.

We welcome your views on other facilities or activities that could be introduced. Please let any of your councillors know of your views, we are here to serve you!

*Patrick Brooks*

# Bletsoe Website

Keep them peeled. The address is [www.bletsoe.org.uk](http://www.bletsoe.org.uk)

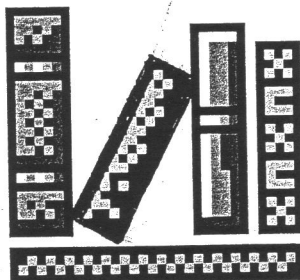
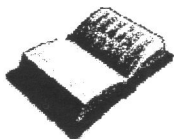
We will be adding much more to the Bletsoe Village Website before Christmas.

Comments, contributions and suggestions are welcomed. You can call me on 781476 or e-mail me at [patrick@oldpeartreecottage.fsnet.co.uk](mailto:patrick@oldpeartreecottage.fsnet.co.uk)

*Patrick Brooks*

## Library

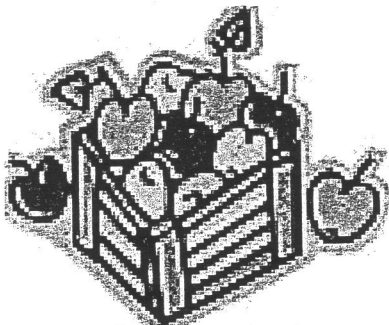
The mobile library is now visiting Bletsoe fortnightly, the next visit being on Friday 14th November. It doesn't stay long, from 10am to 10:10am, but if you are at home on Friday mornings do use this service so we don't lose it.



## Apples Galore

Newcomers may be interested to know that the apples growing on trees in the orchard area on the corner of The Avenue and Memorial Lane may be used by anyone who cares to collect them. They are of excellent quality and although I know it is almost too late this year, there are still a few left. If the children can be persuaded to leave them until they are ready to be picked instead of pulling

them off for apple fights before they are ripe, there will be even more for us all to enjoy next year!



# Approved traders

You may be interested to know that Bedfordshire County Council now run an 'Approved Trader' scheme, whereby lists are available of traders in the area who have been approved by Trading Standards.

Trades covered by the scheme include

- |                    |                    |                          |
|--------------------|--------------------|--------------------------|
| * Driveway laying  | * General building | * Electrical contracting |
| * Double glazing   | * Home security    | * Property maintenance   |
| * Plumbing         | * Motor trade      | * Roofing                |
| * Gas installation | * Pest control     | * Sectional buildings    |



TRADING  
STANDARDS  
APPROVED

Call 012234 228280 or check out on [www.bedfordshire.gov.uk/tsapproved](http://www.bedfordshire.gov.uk/tsapproved)

## Village Hall

The New Year was celebrated with a party in the hall, entertained by the Bonas Brothers, a talented guitar duo. We hope most of you will come this year. It's cheap and you bring your own food. More about the arrangements will be published later. We try to arrange one social event a month during spring and autumn and many of you have enjoyed the wide range of entertainment. We hope you will recommend these events to others and bring in people from outside the village.

The regular events like Bingo and Whist Drives continue to be well

supported, thanks to the unsung help of the small band of organizers. These together with the monthly Coffee Mornings not only raise a modest income but more important, provide a useful venue for villagers to get together. On most Friday nights, from 8.30 on, there is an opportunity for a drink and chat and if there is a demand for it, the bowls mat can be brought out.

The recent Auction raised £150 and several local people managed to dispose of unwanted goods while others enjoyed buying them at very reasonable prices. Once again, we

were pleased to have the services of our local auctioneer Jonathan Knights and we are grateful to him for undertaking this in his professional and entertaining way. We also wish to thank the team who volunteered to fetch and carry goods and helped with the money side on the day.

The Health and Safety inspection by the Borough Council led to a thorough check of the electrical system and some upgrading of the equipment, with the installation of spotlights for the stage area so that we can see the entertainers when we need to.

The Play Area was taken over by the Parish Council in June when the new play equipment was installed.

## **Finance**

As reported to the AGM in March we have a healthy bank balance, a high proportion of which has come from the Summer Fete, the proceeds of which are shared with the Friends of St Mary's. But for that we would have some difficulty in balancing our books as the running costs are fairly high with increasing insurance premiums, licenses etc. There is also the cost of maintenance and cleaning, and the electricity bill is currently £60 a month. We get no regular financial support from anywhere although we are grateful for a grant from the

Parish Council towards the cost of fireworks for Bonfire Night.

The Hall has been hired for meetings, for a local election and private parties on 14 occasions so far this year. We have regular bookings by the Young Farmers Club and the recent renewal of the successful Line Dancing, which started in the Spring on Thursday evenings at 7.30.

The Hall can cater for 100 people for very reasonable rates and there is a Bar. Your Committee has to ensure that there is sufficient income to maintain the Hall for the people of Bletsoe.

## **Future Events**

The Bletsoe Village Hall Winter/Spring diary has recently been distributed. There is a Cockney Night by Cockney Pride in conjunction with Friends of St Mary's on 8 November. Ring Chris on 781917 for tickets.

Please note in your diaries that the Christmas Dance is to be on Saturday 13 December this year when we will be entertained by Millstream. The Christmas Family Social and Draw is on 20 December with the New Years Eve Party, of course, on the 31st. Valentines Day will be celebrated on 14 February with a Dance. Please contact Chris for tickets and information on any of these.

We are always looking for ideas on providing entertainment and facilities that the people of Bletsoe want, so please let any of the Committee Members know of your thoughts. Do we have too many or too little events? Are they the type of entertainment you want? Let any committee member know.

Over the past few months the Committee has said farewell to Bill

Kiss as he moves on to Sharnbrook and the present Members are:

Chris Baldwin (Chairman)

Barbara Button (Secretary)

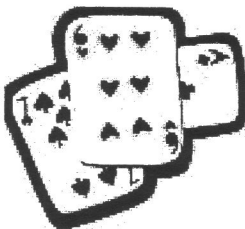
Peter Bryer (Treasurer)

Maria Caves, Hazel Mitchell, Joyce Cullen, Dave Martin and Mike Gibbons

*Chris Baldwin (Chairman)*

## Whist / Bingo

Anyone interested in playing whist or bingo? We hold a whist drive on the second Monday of each month and bingo every fourth Friday at 7.30pm. Dates are advertised on the notice boards and on Barbara's tree.



Next dates are:

Nov 10th - whist

Nov 14th - bingo

## Coffee Mornings

We would like to invite the many new residents of the village to join our monthly coffee mornings.

All ages are welcome from newborn babies to those who are a hundred - or more. What better way to meet people and break the ice than over coffee and a chat?

We meet between 10.30am and 12 noon on the second Thursday of

each month. The November date is the 13th.

*Hazel and Barbara, organisers.*



# Bletsoe WI

Calling all ladies of Bletsoe. Contrary to popular belief, the W.I. is not jam and Jerusalem anymore. You only have to see what a sensation the film Calendar Girls is causing in the cinema. Many famous actresses including Helen Mirren, Celia Imrie and Julie Walters have been pleased to play W.I. members in it. We are not proposing to produce a similar calendar ourselves but we can assure you of a warm welcome.

Why not come along to one of our meetings? We have speakers each

month and they talk about various interests in their lives. Perhaps you have an interesting job or hobby you would like to share with us. We meet on the second Tuesday of each month at 7.45pm in the village hall.

December is party time - a Christmas dinner for all Senior Citizens in Bletsoe on Tuesday 2nd December. Just so we know how many to cater for, if you are a Senior Citizen and would like to come, please give me a call on 781813.

*Barbara Button, president.*

## Friends of St Mary's

The Friends of St Mary's are the body which raises money from all of the Village to support the ongoing restoration of our church building and, together with the Village Hall, benefit from the annual Fete which is the cornerstone of our fundraising.

### Repair and restoration

Over the past decade, there has been a steady programme of repair and restoration and Bletsoe is fortunate to have a well-kept and managed building at the heart of the village. Together with the Parochial Church Council, which is the church body that has to formally manage the fabric and spends the money that the Friends raise, there has been a lot of work

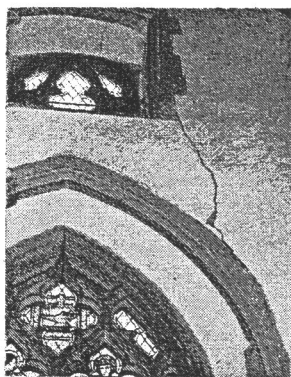
done ranging from the complete redecoration inside, all the external stonework repointed and most of the churchyard wall, supported by the Parish Council in the latter case since the churchyard is a parish resource.

At present, we are waiting for news from the church architect. Usually, we have a five-yearly inspection by law but additional work is done in between as circumstances dictate and there are two items at the moment which we are exploring.

One is the St John Chapel which is actually the part of the church which is in the care of Lord St John. There is a small amount of external work to the roof and the walls plus some

exploratory work to be done to the floor which is sinking over the chapel vault. We hope this will be dealt with this winter.

More urgently, because of the long dry summer, the West End of the main church wall internally has developed several severe cracks that may even be affecting the important stained glass window and we have a specialist coming as you read this. We hope that this doesn't mean serious work or our fundraising will acquire a degree of urgency.....



Finally and sadly, this autumn we will be saying goodbye to one of the two chestnut trees which have stood flanking the lytchgate for over a century – in fact they preceed the lytchgate by some 40 years having been in the churchyard since the 1860s according to Ted Bean's assiduous historical investigation. That's probably some 40 years more than we could have expected, indeed some years back, it was presumed



they would be coming to the end of their span and replacements were planted below them. When the one which has now virtually died has been felled, we will assess whether we need further planting but we have already been offered one semi-mature specimen by a villager which we will be delighted to plant up in the churchyard this year.

## Fundraising

In order to carry out the maintenance work, which all seems to cost an inordinate amount due to the involvement of specialist craftsmen, we have to raise money!

However in setting a fund-raising programme we also try to provide a varied selection of social events to suit a wide variety of tastes (both culinary and cultural!).



During the last year events have included an organ recital by our very own Peter Gibbons (thank you Peter for a wonderful concert), a Sunday Lunch, and then the regular feature on our calendar at the end of April, the Plant Sale. Since then we have feasted on puddings while being entertained by the very talented young magician Matthew Duggan (fresh from the launch of Harry Potter in Paris!) and then a murder mystery evening which tested those old grey cells!

### Future events

Our next event is an evening of entertainment by Cockney Pride. We are joining with the Village Hall to bring you a very professional group. Please join us on 8th November to enjoy top quality entertainment on your doorstep (tickets available from Chris Baldwin on 781917).

This will be followed by our AGM on 13 November - it may not be as exciting as other events, but it gives everyone the opportunity to find out what we do and give their views. An Advent Concert by the outstanding choral group Cantamus will round off the year.

We would like to thank all those who have supported us through the year and would encourage anyone who has never been to one of our events come along and give it a try!

If you have any ideas or comments please contact any of us:

Evelyn Baker (Chairman) 781179

Ray Franklin (Treasurer) 782305

Alison Bean (Secretary) 781372

Edward Bean 781372

Mike Gibbons 781161

June Jones 781824

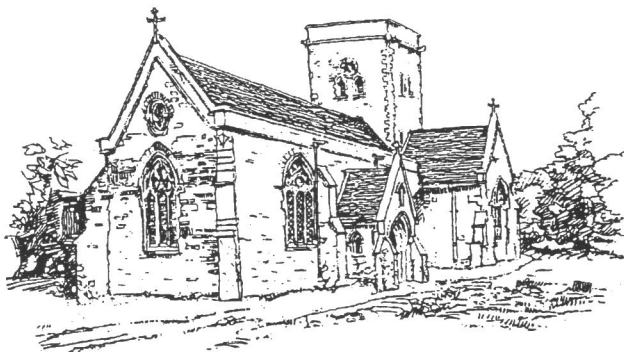
David Martin 782579

### PLANT SALE - PLEA FOR PLANTS AND POTS

Next year, as in the previous years, we will be holding our own 'home-grown' stall. If you can provide anything in the way of plants - seedlings, divided perennials or any rooted cuttings these would all be gratefully received - the more variety the better.

Also, due to the over-zealous enthusiasm of some individuals, we have now exhausted the supply of pots that were so generously donated a couple of years ago. If you have any pots, could you please call Alison on 781372 or deliver to 32 The Avenue.

# St Mary's Church



The Parochial Church Council is the body charged with maintaining the worship in St Marys (or, indeed, elsewhere if necessary – the church is allowed to meet where it thinks is most appropriate so if it gets really chilly it is perfectly possible to meet in the Village Hall or your front room if you'd like it!)

The PCC is fortunate to have the support of the Friends and the Parish Council with the building and the churchyard (the Parish Council look after part of the churchyard in the parish grass-cutting contract while the PCC cuts the current graves area).

Paired as it is with All Saints, Riseley, St Marys PCC are one of the parishes that are currently discussing how churches are grouped together in North Bedfordshire. As you may know, there are not enough vicars to go round at the moment so there are continually parishes in North Beds without one. At some point, there will

no doubt be further changes in the groupings of villages with vicars though at present Bletsoe PCC is happy to say that our relationship with Riseley is working well and will continue. We provide a welcome haven of sanity for those up the road who have had enough of guitars every Sunday.....

Seriously, the PCC has two new members this year (that's enough dramatic change for a decade – Ed). It is solvent though demands for more funding to go to the wider work of the Church of England are ever-present whilst the costs of insurance and services continue to rise though the Friends have been very helpful with these extra demands.

You are very welcome to join the congregation any Sunday at 10 am at St Marys. Look out, too, for the special Christmas services.

*Mike Gibbons, Churchwarden*

# Bletsoe Fete 2003

A small committee gathered in the autumn of 2002 under the new chairmanship of Ann Binder to plan the 2003 fete. Perhaps small in number but large in spirit!

The venue is always the first decision of any committee. In the past the fete has been hosted at the Castle, the Old Rectory and very nearly in the Deas garden (the weather beat us for once!) The Parish Field was agreed as the facilities are all on hand making life easier for setting up!

The quest to find advertisers begins right at the start of planning and Chris Baldwin was on a mission to better his magnificent efforts of 2002 and this he did – congratulations and thanks to him on an absolutely splendid contribution again. The programme this year was stuffed full

which in turn meant that Alison Bean had hours to spend on the setting of it. Thanks must go to Alison as well for her hard work – not an easy task and a difficult one when the copy is all of different shapes and sizes.

The sun shone on June 21 as it has done most of the summer! The field was packed with stalls, vintage cars, bikes and people wandering around enjoying the summer sunshine. The Ouse Valley Swing Band played throughout the afternoon as they have done for a number of years adding to the relaxed atmosphere. Unfortunately the old fire engine had broken down during the morning so was unable to attend to give the children rides around the field – perhaps he will make it next year!!! The birds of prey proved to be a star attraction. It was fascinating to see



these beautiful birds and really interesting to hear all about them.

The afternoon concluded with the draw – lots of prizes and lots of winners! Thanks must go to Joyce for her huge efforts in managing the draw – not an easy task!

All in all, a splendid afternoon, if not as well attended as on previous years!

Fish and chip suppers were enjoyed just before it began to rain in the evening and everyone had to move into the hall for cover to listen to the

entertainment provided by Paul Wilmot. He certainly enhanced the evening with his folk singing.

The Friends of St Mary and the Village Hall shared the proceeds, which amounted to just over £3,000 – a very good effort again.

A new committee has been formed for next year again under the able Chairmanship of Ann Binder. If you are interested in joining them or even helping on the day of the fete, which next year will be on on Saturday 19th June then please call Ann on 782362.

## **BLETSOE BROADBAND**

After a brief but intense summer campaign to bring Broadband to our local villages we were not only very pleased, but also extremely surprised, to hear that our exchange had been placed on the list for immediate Broadband activation. At the time, it was the only rural exchange in Bedfordshire to be chosen for upgrade.

Broadband provides high speed (512,000 bits per second) internet access over an existing BT phone line, with the added advantage that internet access is 'always on' but does not interfere with normal telephone calls. It provides fast and continuous internet access, rapid delivery of internet pages, and allows almost immediate receipt and delivery of email.

Following a short delay whilst equipment was installed and tested at the exchange, the first Bletsoe subscriber (me! yippee!!) was connected to Broadband in mid-September. For those working from home, myself included, this effectively removes the disadvantage of slow communications that we previously suffered. For example, I can now rapidly connect to my clients' computer systems in order to remotely sort out problems they may be experiencing. This saves me the time and inconvenience of travelling to places as far away as Leicester, Bristol, or Manchester, and saves the client the time and expense involved in me travelling to their premises.

If you are interested in Broadband, take a look at our website at [www.ovb.org.uk](http://www.ovb.org.uk), where you can check your line for Broadband availability and find pointers to websites giving comparative information on suppliers and prices. Obviously, it would be unethical of me to recommend any particular supplier, but if, instead, you ask me who I use, I will be pleased to give you an honest reply!

*Edward Bean, Ouse Valley Broadband Campaign, Tel 781372.*

# Bayleaf - out and about in the Village

"It's been a busy year for Doctor Mark", thought Bayleaf as he levered his stiff and aching body out of the Malna House woodshed where he was currently forced to live after the wife had decided to have his outhouse rethatched during her extended stay in Portugal. "If only my name was David then maybe I'd have been invited to share her sunshine villa since almost every other David in the village (and beyond) seems to have been invited there this year", he said, but no, like the rest of us, Augustus Reginald Bayleaf (87 and of no fixed abode) was confined to the frosty autumnal Bletsoe mornings.

So, in the early dawn, Bayleaf eased his way past the old Post Office (not The Old Post Office, you understand, rather the most recent one) onto The Avenue almost tripping over the inert form of what appeared to be a villager the worse for wear, slumped on the ground in front of the post box under the noticeboard. In the murky twilight it was hard to recognise the formerly dapper outline of Malcolm from The Spinney.

"Hello old chap" said the well-spoken and grammatically impeccable voice that only an Essex English scholar and cricketing fan could possess, "are you the postman, only I wonder if I could have my letter back"? Since Bayleaf was, as usual, dressed in something closer to a sack than a smock and mainly of a earthy colour (and smell) it was hard to know why he was being mistaken for the postie but it transpired that Malcolm had posted the letter for Bill Rowland containing a sum of money in the postbox and his subscription to 'Men & Motors' through Bill's door much to everyone's embarrassment!

Incidentally, The Old Post Office is now home to a musical commune made up of choirboys, musical theatre stars, The Blues Brothers and Bishop Edward's in-laws. "Yet more musical entertainment in the village" thought Bayleaf - perhaps we should have another Village Concert once Auntie Button was well enough to marshal the Handbell Ringers.

Talking of Auntie B, this year's village queue for Doctor Mark's attention comprised three bad backs, four bad legs and Auntie Button

who was clearly trying to have him all to herself this year.....after this batch of medical exploits, Auntie Babs was apparently hoping to get herself included on the next series of 'Restoration'. She managed to fall out of bed in the middle of the night when she rolled over in her sleep, fell on the floor breaking a rib and giving her pussy the fright of its life (much like the fright the rest of the Yoga class got when the Bishop of Bletsoe's wife fell asleep in the middle of the lesson and started snoring)!

Auntie B then ended up in hospital for the insertion of both a new shoulder and a knee in 2003 - there's no truth in the scurrilous rumour that the staff thought she was more virulent than MRSA - indeed, Bedford Hospital was so impressed they've had her back in to entertain those who have temporarily mislaid their brains. They decided they could save money on not buying a TV for the ward by putting her in the corner and asking her to continuously sing 'I Am The Music Man' to all the old dears.....

The story was that some clot from Bletsoe had been admitted to hospital and it could have been David from Top Row who had been having his 60th Birthday overhaul or Auntie B. But the doctors soon put everyone right by saying that it was Auntie and she wasn't/hadn't got one. Clearly she couldn't have because it was like getting blood out of a stone - it took them eight hours to insert the needle which Auntie Button said was "almost as long and about as enjoyable as a Village Hall Committee Meeting!"

"Anyway, it was a good job", thought Bayleaf, "that the church hadn't disposed of Auntie B's commode which, many years ago, she kindly donated to St Mary's to hold the collection plate. It's been a godsend for her in her current condition".

Hopefully Auntie B will get out for the Carol Singing in December though it will have to be more successful than last year when the WI Carol singers were warmly welcomed especially at The Old Rectory where they sang a whole carol to someone behind the door which turned out to be the dog.....

Still Christmas presents loomed on the horizon and Bayleaf hoped they'd be exciting as well as useful - Bayleaf's children had put a

packet of condoms in his stocking last year and then were most upset to find he'd used one. The wife said it was just for old times' sake!

It had been a year for anniversaries - the Gibbons' Silver Wedding (Bayleaf wondered how she'd put up with him for that long but it was probably because he was never there); the Jones' 30th and Double Retirement (Bayleaf supposed that it was only fair that Dave should organise his own party so he could specify what food he could have for first, seconds, thirds etc etc); the Martin's 40th (Yes my dear.....) and, top of the list, the Hamills who had their 60th wedding anniversary in January. Con had asked Nora if she'd like a diamond for it as he hadn't given her one when they got married and she'd said no, she'd rather have a Dyson! Pauline wondered if it was because her mother wanted a bit more suction.....

The great technology breakthrough this year was not Danny & Sylvia finally sorting out their e-mail - don't worry if you think you haven't received one from them because Danny will ring you up to check you've received it! No, it was the village's highspeed internet connection known, said he proudly, as "Bayleaf Broadband!" Bayleaf would shortly be digging a trench up The Avenue and up to every front door in the village which would be connected by Edna's redundant knicker-elastic from the WI Jumble Sale Underwear Stall. A simple code of twangs would shortly be delivered which would allow everyone to access the events in the Village Hall without leaving their front doors...."Now everyone can be riveted by the Parish Council discussions from the comfort of their own armchairs!" said Bayleaf proudly.

And talking of the Parish Council, the most exciting day this year had been when the Chairman had called out the Fire Brigade to stop his house sinking into a hole in the front drive. Two engines and twenty burly young men in uniform were seen peering into the crevasse that opened in Bennetts Close - far too many red-blooded young men for the Chairman's wife and we had to stop Frank from crawling into it....

"Times may change and people move", thought Bayleaf, "but life in Bletsoe goes on as before!"

The editor accepts no responsibility for the scurrilous views expressed here which are entirely the responsibility of the author, who tries to remain anonymous for reasons of personal safety.

# **Events in Bletsoe - November/December**

## **November**

Sat 8th	Cockney Night (781917)
Mon 10th	Whist Drive (781917)
Tues 11th	WI (781813)
Thurs 13th	Coffee Morning (781813)
Thurs 13th	Friends of St Mary AGM (in church) (781372)
Fri 14th	Bingo (781917)
Sat 22nd	Church coffee morning (781161)
Sat 29th	Advent Concert with Cantamus (in church) (781372)

## **December**

Tues 2nd	WI Senior Citizen's Christmas Party (781813)
Mon 8th	Whist Drive (781917)
Thurs 11th	Coffee Morning (781813)
Fri 12th	Bingo (781917)
Sat 13th	Christmas Dance with Millstream (781917)
Sat 20th	Christmas Family Social and Draw (781917)
Sun 21st	Christmas Carol Service 4pm (in church) (781161)
Thurs 25th	Christmas Family Communion 9.30am (in church) (781161)
Wed 31st	New Year's Eve Party (781917)

All these events take place in the Village Hall (unless shown otherwise)

Also

every Sunday there is a church service at 10 am (except those above)

every Friday the social Club bar is open in the Village Hall